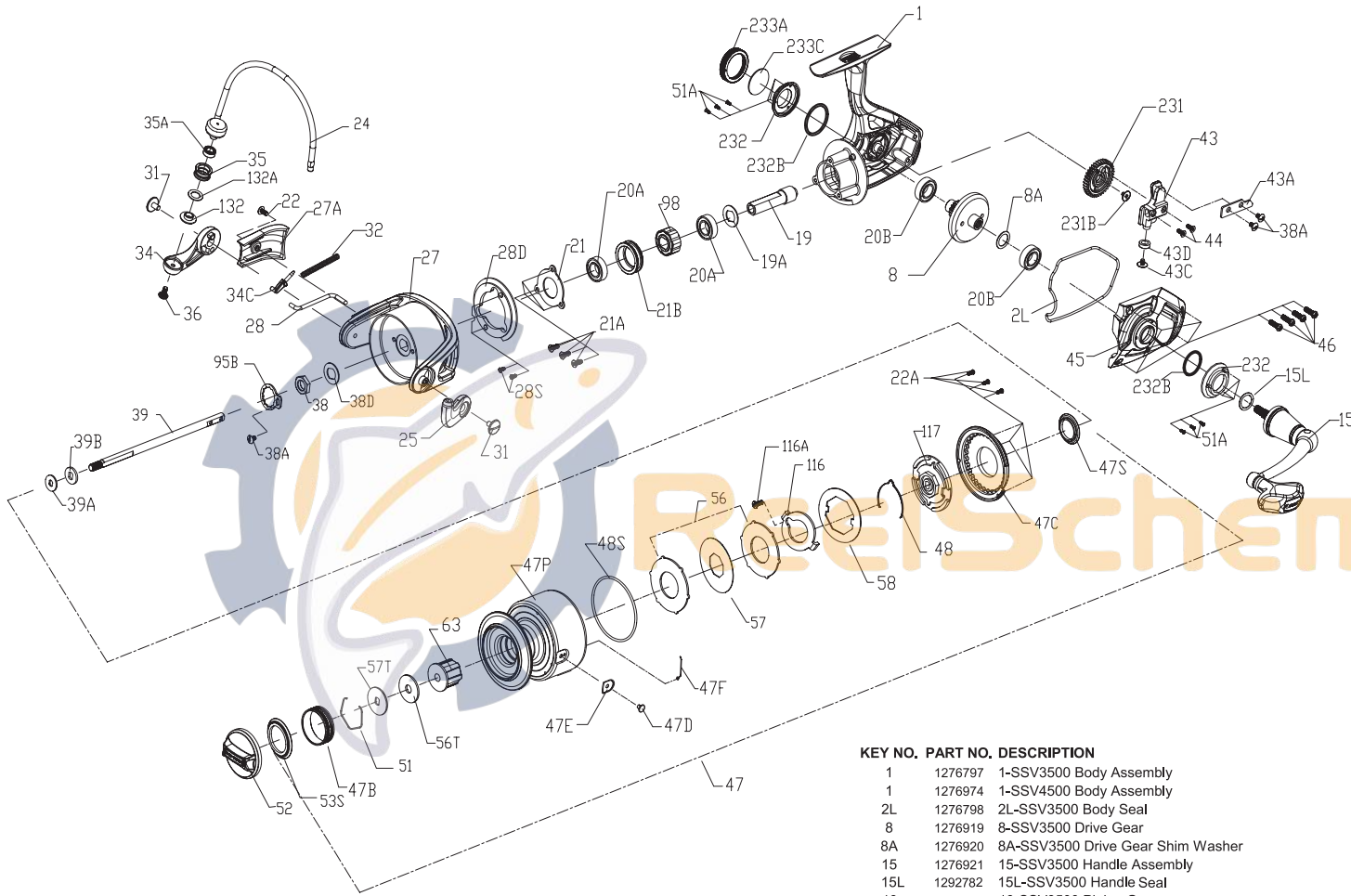




PARTS LIST FOR MODEL SSV3500/SSV4500



KEY NO. PART NO. DESCRIPTION

| | | |
|-----|---------|--|
| 1 | 1276797 | 1-SSV3500 Body Assembly |
| 1 | 1276974 | 1-SSV4500 Body Assembly |
| 2L | 1276798 | 2L-SSV3500 Body Seal |
| 8 | 1276919 | 8-SSV3500 Drive Gear |
| 8A | 1276920 | 8A-SSV3500 Drive Gear Shim Washer |
| 15 | 1276921 | 15-SSV3500 Handle Assembly |
| 15L | 1292782 | 15L-SSV3500 Handle Seal |
| 19 | 1276923 | 19-SSV3500 Pinion Gear |
| 19A | 1277424 | 19A-SSV3500 Pinion Gear Washer |
| 20A | 1276924 | 20A-SSV3500 Ball Bearing (2 req.) |
| 20B | 1192619 | 20B-3000 SG Ball Bearing (2 req.) |
| 21 | 1276925 | 21-SSV3500 Pinion Bearing Retainer |
| 21A | 1276926 | 21A-SSV3500 Pinion Retainer Screw (3 req.) |
| 21B | 1276927 | 21B-SSV3500 Pinion Ball Bearing Collar |
| 22 | 1276928 | 22-SSV3500 Rotor Cover Screw |
| 22A | 1277047 | 22A-SSV5500 Drag Cover Screw (3 req.) |
| 24 | 1276929 | 24-SSV3500 Bail Assembly |
| 24 | 1276975 | 24-SSV4500 Bail Assembly |
| 25 | 1276930 | 25-SSV3500 Bail Holder |
| 27 | 1276931 | 27-SSV3500 Rotor |
| 27 | 1276976 | 27-SSV4500 Rotor |
| 27A | 1276932 | 27A-SSV3500 Rotor Cover |
| 27A | 1276977 | 27A-SSV4500 Rotor Cover |
| 28 | 1276933 | 28-SSV3500 Bail Trip Lever |
| 28 | 1276978 | 28-SSV4500 Bail Trip Lever |

KEY NO. PART NO. DESCRIPTION

| | | |
|------|---------|---|
| 28D | 1276934 | 28D-SSV3500 Rotor Brake |
| 28D | 1276979 | 28D-SSV4500 Rotor Brake |
| 28S | 1276935 | 28S-SSV3500 Rotor Brake Screw (2 req.) |
| 31 | 1276936 | 31-SSV3500 Bail Arm Screw (2 req.) |
| 32 | 1276937 | 32-SSV3500 Bail Spring |
| 34 | 1276938 | 34-SSV3500 Bail Arm |
| 34C | 1277058 | 34C-SSV5500 Pivot Arm |
| 35 | 1276939 | 35-SSV3500 Line Roller |
| 35A | 1276940 | 35A-SSV3500 Line Roller Ball Bearing |
| 36 | 1277061 | 36-SSV5500 Line Roller Screw |
| 38 | 1276941 | 38-SSV3500 Rotor Nut |
| 38A | 1277063 | 38A-SSV5500 Rotor Nut Lock Plate Screw (3 req.) |
| 38D | 1276942 | 38D-SSV3500 Rotor Washer |
| 39 | 1276943 | 39-SSV3500 Main Shaft |
| 39 | 1276980 | 39-SSV4500 Main Shaft |
| 39A | 1276944 | 39A-SSV3500 Spool Adjust Washer |
| 39B | 1276945 | 39B-SSV3500 Main Shaft Washer |
| 43 | 1276946 | 43-SSV3500 Oscillation Slider |
| 43A | 1276947 | 43A-SSV3500 Oscillation Slider Guide |
| 43C | 1277071 | 43C-SSV5500 Oscillation Slider Bushing Screw |
| 43D | 1279457 | 43D-SSV3500 Oscillation Slider Bushing |
| 44 | 1277072 | 44-SSV5500 Main Shaft Screw (2 req.) |
| 45 | 1276948 | 45-SSV3500 Body Cover |
| 45 | 1276981 | 45-SSV4500 Body Cover |
| 46 | 1276949 | 46-SSV3500 Body Cover Screw (4 req.) |
| 47 | 1276950 | 47-SSV3500 Spool Assembly |
| 47 | 1276982 | 47-SSV4500 Spool Assembly |
| 47B | 1276951 | 47B-SSV3500 Spool Band |
| 47B | 1277076 | 47B-SSV5500 Spool Band |
| 47C | 1276952 | 47C-SSV3500 Drag Cover |
| 47D | 1276953 | 47D-SSV3500 Line Clip |
| 47E | 1276954 | 47E-SSV3500 Line Clip Bushing |
| 47F | 1276955 | 47F-SSV3500 Line Clip Retainer |
| 47F | 1276983 | 47F-SSV4500 Line Clip Retainer |
| 47P | 1276956 | 47P-SSV3500 Spool |
| 47P | 1276984 | 47P-SSV4500 Spool |
| 47S | 1277082 | 47S-SSV5500 Drag Drive Plate Seal |
| 48 | 1276957 | 48-SSV3500 Spool Clicker |
| 48S | 1276958 | 48S-SSV3500 Drag Cover Seal |
| 51 | 1276959 | 51-SSV3500 Drag Washer Retainer |
| 51 | 1277085 | 51-SSV5500 Drag Washer Retainer |
| 51A | 1277086 | 51A-SSV5500 Bearing Retainer Screw (6 req.) |
| 52 | 1276960 | 52-SSV3500 Drag Knob Assembly |
| 53S | 1293250 | 53S-SSV3500 Drag Knob Seal |
| 56 | 1276961 | 56-SSV3500 Drag Friction Washer (2 req.) |
| 56T | 1276962 | 56T-SSV3500 Drag Friction Washer |
| 56T | 1277089 | 56T-SSV5500 Drag Friction Washer |
| 57 | 1276963 | 57-SSV3500 Keyed Drag Washer |
| 57T | 1276964 | 57T-SSV3500 Keyed Drag Washer |
| 57T | 1276985 | 57T-SSV4500 Keyed Drag Washer |
| 58 | 1290705 | 58-SSV3500 Drag Eared Washer |
| 63 | 1276965 | 63-SSV3500 Spool Bushing |
| 63 | 1276986 | 63-SSV4500 Spool Bushing |
| 95B | 1277093 | 95B-SSV5500 Rotor Nut Locking Plate |
| 98 | 1276966 | 98-SSV3500 Clutch / Sleeve Assembly |
| 116 | 1279458 | 116-SSV3500 Keyed Drag Washer Lock Plate |
| 116A | 1279509 | 116A-SSV3500 Keyed Drag Washer Lock Plate Screw |
| 117 | 1276967 | 117-SSV3500 Drag Drive Plate |
| 132 | 1277096 | 132-SSV5500 Line Roller Collar |
| 132A | 1277097 | 132A-SSV5500 Line Roller Washer |
| 231 | 1276968 | 231-SSV3500 Oscillation Gear |
| 231 | 1276987 | 231-SSV4500 Oscillation Gear |
| 231B | 1307857 | 231B-SSV3500 Oscillation Gear Screw |
| 232 | 1276970 | 232-SSV3500 Bearing Retainer (2 req.) |
| 232 | 1276988 | 232-SSV4500 Bearing Retainer (2 req.) |
| 232B | 1302502 | 232B-SSV3500 Bearing Retainer O - Ring(2 req.) |
| 233A | 1276972 | 233A-SSV3500 Handle Cap |
| 233C | 1276973 | 233C-SSV3500 Handle Cap Washer |